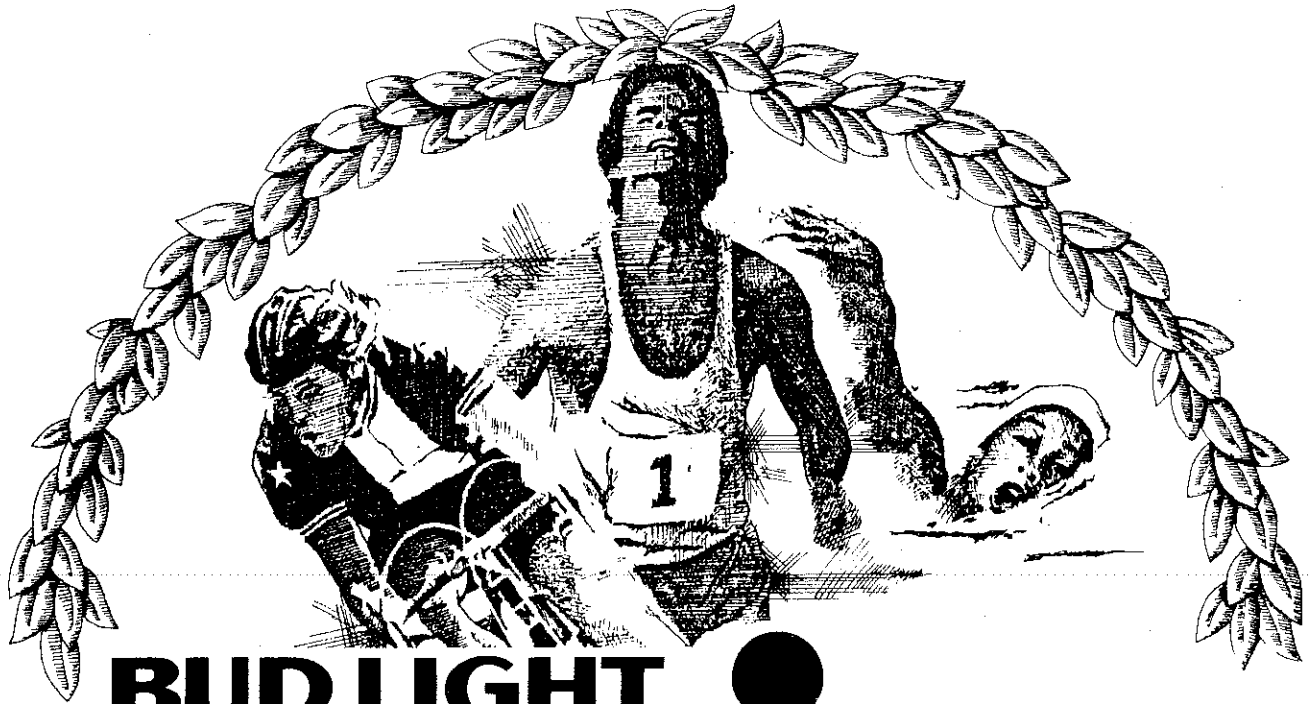


RACE RESULTS

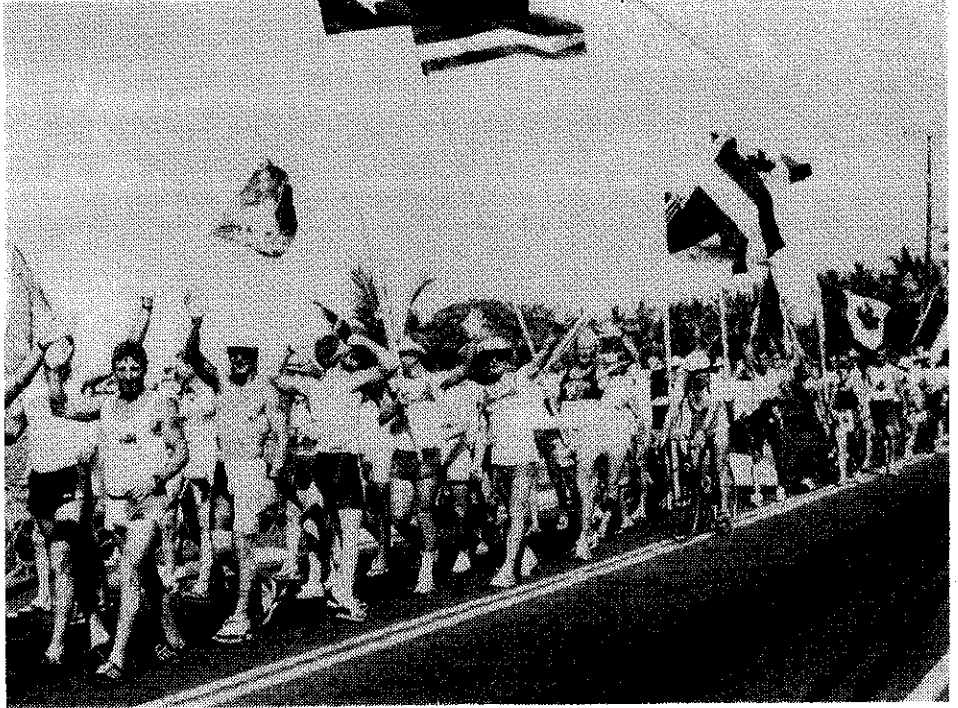
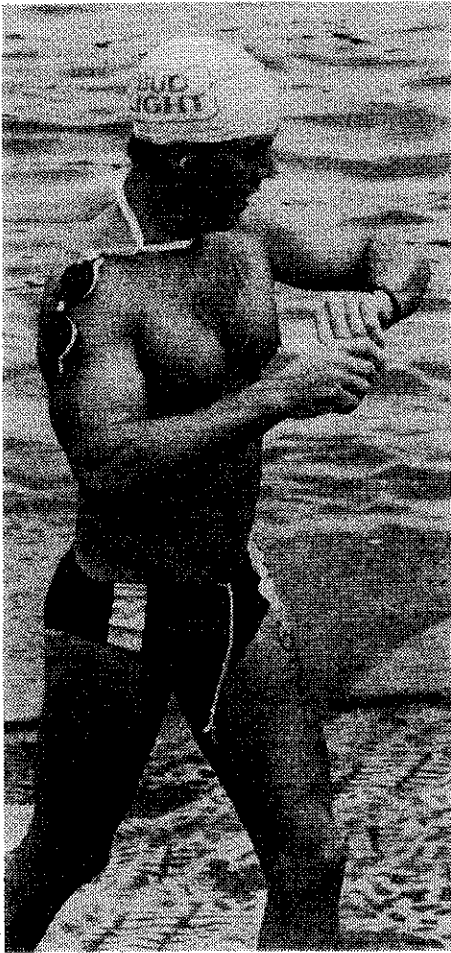
October 26, 1985



BUD LIGHT ●
IRONMAN

**TRIATHLON WORLD
CHAMPIONSHIP®**

HAWAII



 **KONA SURF RESORT**
HAWAII

HAWAIIAN AIR 

**BUD
LIGHT**
BEER



National Car Rental

Place	Race#	Name	S/A	St or Country	Swim Split	Swim Place	Bike Split	Bike Place	Run Split	Run Place	Total Time	Age Group Place	State / Country Place
DNF	379	FUJINAGA, CLAUDIA R	F/44	HI	01:46:20.6	927	07:48:52.0	976	DNF	DNF	DNF	DNF	DNF
DNF	1237	GLICKERT JR, WARREN J	M/34	MO	01:15:26.4	377	05:57:06.5	229	DNF	DNF	DNF	DNF	DNF
DNF	1098	BRESHAM, RANDY M	M/23	HI	01:18:04.9	447	DNF	DNF	DNF	DNF	DNF	DNF	DNF
DNF	417	GRIFFIN, HOWARD E	M/56	AZ	DNF	DNF	DNF	DNF	DNF	DNF	DNF	DNF	DNF
DNF	1099	GUSTAVSSON, TOMAS	M/22	SWEDEN	01:31:30.8	755	DNF	DNF	DNF	DNF	DNF	DNF	DNF
DNF	475	HOGAN, ROB	M/29	CA	01:08:08.7	238	06:19:47.4	479	DNF	DNF	DNF	DNF	DNF
DNF	1256	IACONETTI, RICK W	M/33	HI	01:02:54.7	143	06:00:09.0	254	DNF	DNF	DNF	DNF	DNF
DNF	508	JEGGE, WALTER	M/37	SWITZERLAND	01:18:54.0	478	07:10:58.1	902	DNF	DNF	DNF	DNF	DNF
DNF	570	KROEGER, MARJORIE	F/51	NY	01:39:20.4	860	06:51:20.4	784	DNF	DNF	DNF	DNF	DNF
DNF	596	LAYMAN, BOBBY D	M/58	HI	DNF	DNF	DNF	DNF	DNF	DNF	DNF	DNF	DNF
DNF	600	LIEDTKE II, JAMES L	M/34	CA	DNF	DNF	DNF	DNF	DNF	DNF	DNF	DNF	DNF
DNF	614	LLOYD-WALLACE, CAMPBELL L	M/33	FL	01:01:12.7	102	05:36:43.1	60	DNF	DNF	DNF	DNF	DNF
DNF	638	MALINEN, JARI	M/23	FINLAND	01:12:33.4	327	06:10:49.9	365	DNF	DNF	DNF	DNF	DNF
DNF	651	MATTEI, PETER D	M/61	CA	DNF	DNF	DNF	DNF	DNF	DNF	DNF	DNF	DNF
DNF	709	MORRIS, TOM	M/41	CANADA	01:17:34.8	427	05:12:25.8	7	DNF	DNF	DNF	DNF	DNF
DNF	1122	MOSS, JULIE D	F/27	CA	00:59:40.0	82	05:37:20.0	62	DNF	DNF	DNF	DNF	DNF
DNF	732	NELSON, MARK S	M/24	HONG KONG	01:11:17.1	295	DNF	DNF	DNF	DNF	DNF	DNF	DNF
DNF	737	NISS, DOROTHY F	F/42	MA	01:52:59.1	963	DNF	DNF	DNF	DNF	DNF	DNF	DNF
DNF	751	OKIMURA, KEVIN D	M/22	HI	01:01:07.8	98	07:20:10.6	925	DNF	DNF	DNF	DNF	DNF
DNF	43	OLSON, JULIE A	F/25	MN	01:03:27.9	150	DNF	DNF	DNF	DNF	DNF	DNF	DNF
DNF	750	OVIDEU, PEDRO D	M/45	CA	02:06:39.3	998	DNF	DNF	DNF	DNF	DNF	DNF	DNF
DNF	1177	PIERSON, PHIL E	M/30	WA	01:02:21.1	126	06:07:49.6	332	DNF	DNF	DNF	DNF	DNF
DNF	805	REIS, WAYNE R	M/37	HI	01:07:21.2	225	DNF	DNF	DNF	DNF	DNF	DNF	DNF
DNF	814	RINGER, CONRAD M	M/32	HI	01:12:58.0	330	06:40:58.7	703	DNF	DNF	DNF	DNF	DNF
DNF	816	ROALES-N BROWN, PALOMA P	F/30	WA	01:58:56.7	979	DNF	DNF	DNF	DNF	DNF	DNF	DNF
DNF	831	ROUSE, MARK C	M/32	MI	01:11:44.4	307	DNF	DNF	DNF	DNF	DNF	DNF	DNF
DNF	1137	SASMORE, PETER D	M/23	CA	01:02:20.2	125	06:37:31.3	662	DNF	DNF	DNF	DNF	DNF
DNF	848	SAUNDERS, JEAN	F/51	CA	01:46:22.0	928	08:15:38.5	987	DNF	DNF	DNF	DNF	DNF
DNF	862	SCHULTZ, HAROLD P	M/38	NY	02:05:18.3	995	07:26:58.9	943	DNF	DNF	DNF	DNF	DNF
DNF	1139	SHAW, JACQUELINE	F/29	CA	01:02:29.3	134	DNF	DNF	DNF	DNF	DNF	DNF	DNF
DNF	884	SINGER, HOWARD I	M/40	FL	01:15:55.3	386	DNF	DNF	DNF	DNF	DNF	DNF	DNF
DNF	891	SMITH, JEREMY J	M/31	CA	DNF	DNF	DNF	DNF	DNF	DNF	DNF	DNF	DNF
DNF	1182	SPINDER, BILL	M/52	CO	01:25:42.4	640	DNF	DNF	DNF	DNF	DNF	DNF	DNF
DNF	916	STONE, JERRY N	M/45	CA	01:20:32.8	513	DNF	DNF	DNF	DNF	DNF	DNF	DNF
DNF	63	THORNTON, JEFF A	M/25	CA	00:51:54.1	4	DNF	DNF	DNF	DNF	DNF	DNF	DNF
DNF	955	TIMMS, NATALIE	F/22	AUSTRALIA	00:58:15.5	56	DNF	DNF	DNF	DNF	DNF	DNF	DNF
DNF	973	VAIL, CHRISTY L	F/35	HI	01:47:39.7	939	DNF	DNF	DNF	DNF	DNF	DNF	DNF
DNF	985	VINCH, ROSEMARIE	F/31	NJ	DNF	DNF	DNF	DNF	DNF	DNF	DNF	DNF	DNF
DNF	993	WALDRON, GAILYN L	F/42	CO	01:32:00.2	765	DNF	DNF	DNF	DNF	DNF	DNF	DNF
DNF	1005	WEILER, PETER B	M/30	CA	01:02:09.1	120	DNF	DNF	DNF	DNF	DNF	DNF	DNF
DNF	1041	YAMANAKA, CHIEKO	F/36	JAPAN	DNF	DNF	DNF	DNF	DNF	DNF	DNF	DNF	DNF

